



1340 North Melrose Drive, Vista, CA 92083
Phone 951-587-9222 Fax 760-758-5991
Email: info@motoworks.com

**SR4 4 Stroke Slip-On
Part # 60-4002
2004-06 Yamaha Rhino**

Exhaust kit bill of materials

1	Instruction sheet
1	Tailpipe with SR4 muffler
1	8mmx1.25x45mm flange bolt
1	8mm flange nut
1	6mm flange nut
1	Spark arrestor
2	Motoworks stickers

Caution: LET VEHICLE COOL DOWN AT LEAST 1 HOUR BEFORE BEGINNING INSTALLATION.

Note: READ ALL INSTRUCTIONS BEFORE BEGINNING INSTALLATION.

RHINO BED DOES NOT NEED TO BE REMOVED BUT IS RECOMMENDED!!

Removal of the stock exhaust,

1. Remove heat shield. (Figure 1)
2. Remove bolt connecting muffler bracket and rubber grommet on right side of rhino. (Figure 2) (**Caution wire washer will fall when bolt is removed**). (Figure 10)
3. Remove the three clamp bolts that connect the exhaust to stock header. (Figure 3)
4. Remove bolt from muffler bracket in middle of stock exhaust housing. (Figure 4) (**Caution wire washer will fall when bolt is removed**). (Figure 11)
5. Make a mark on top of bracket for re-installment and remove bracket. (Figure 4)
6. Slide stock exhaust off of mid-pipe but do not remove exhaust. (Figure 5)
7. Remove the stock head pipe by removing the four nuts that are connecting the stock head pipe flanges to motor. (Figure 6)
8. Remove stock header by removing through top of Rhino as shown in Figure 7 (**Caution gaskets fall down when removing header off of studs**).
9. Remove clamp from end of exhaust that connects to stock header. (Figure 8)
10. Remove stock exhaust from rear of rhino by sliding bracket to the side so that the bracket clears the rear shock tower brace. (Figure 9)

11. Re-install header gaskets if they fell out of place. (Cylinder head: place a small amount of grease on one side to hold gasket into place.)

Installation Motoworks exhaust

1. Install Motoworks exhaust from rear of Rhino.
2. Install the stock clamp on the Motoworks exhaust that connects the exhaust to the header.
3. Install the stock header through the top of the Rhino and tighten nuts.
4. Slide Motoworks exhaust on to mid-pipe and replace clamp bolts and tighten. (Figure 12)
5. Replace bracket to rear shock tower brace. (Figure 9)
6. Install 8x1.25x45 bolt and nut provided for rear muffler bracket. (**Make sure wire washer is placed between bracket and Motoworks exhaust bracket**). (Figure 13)
7. Install bolt connecting to muffler bracket and rubber grommet on right side of rhino with 6mm nut not provided. (**Make sure wire washer is placed between rubber grommet and Motoworks exhaust flange**). (Figure 14)
8. Re-check all your work.
9. Replace Rhino bed if removed.
10. We recommend that you clean the entire exhaust system with a mild detergent, i.e. glass cleaner prior to starting as any oily residue may cause permanent staining.
11. Before operating check for proper clearance between Motoworks exhaust and ATV i.e. frame, plastic, brake line, fuel line etc if problems exist re-check work

Note: It is normal for the new exhaust to emit white smoke the first time you start the ATV. This is from the oil used during manufacturing.



Figure 1

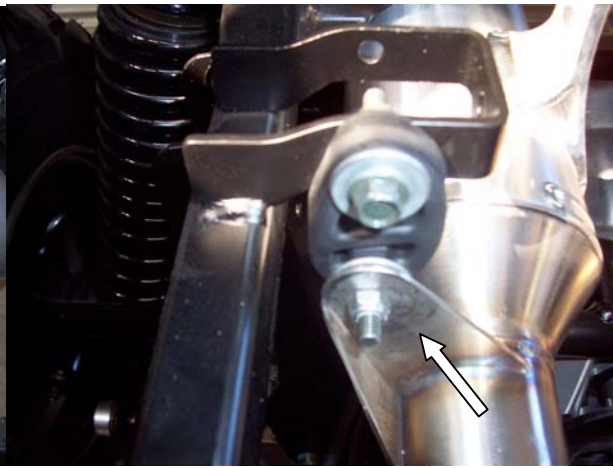


Figure 2

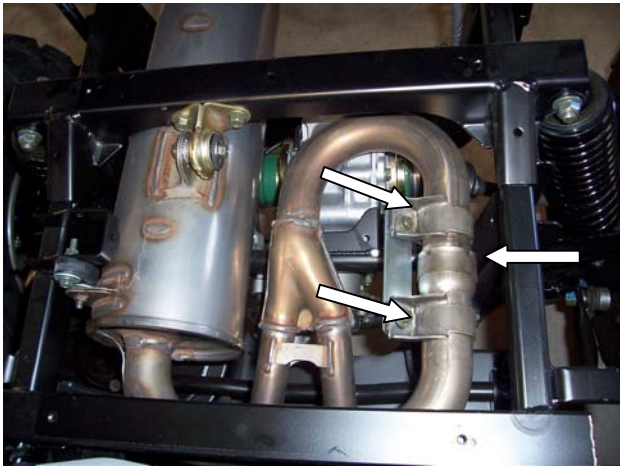


Figure 3

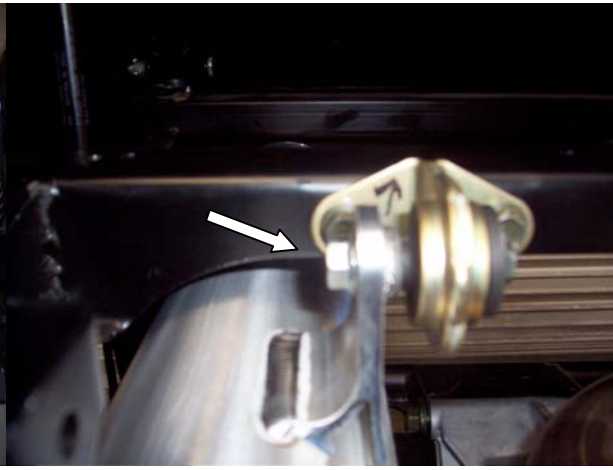


Figure 4

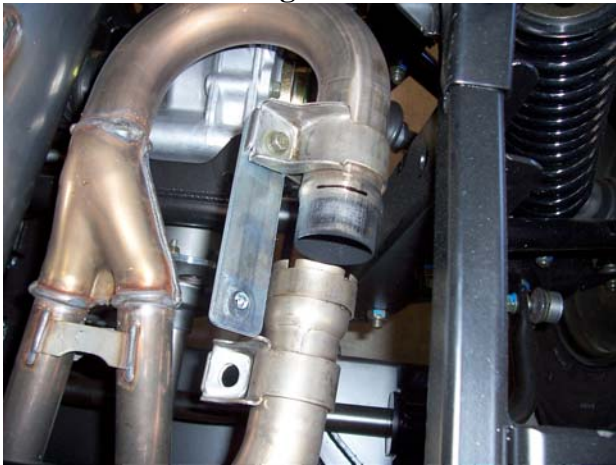


Figure 5

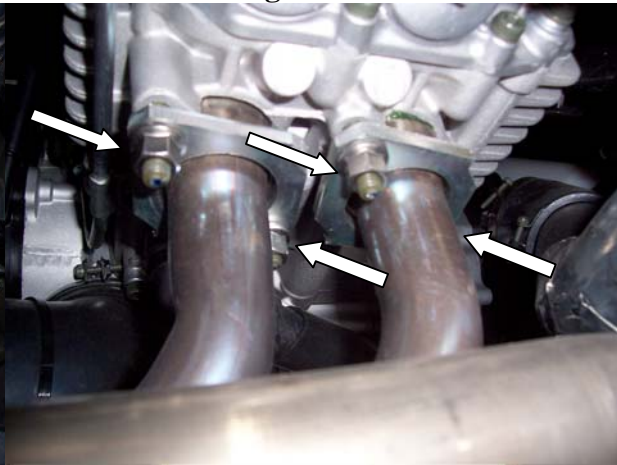


Figure 6



Figure 7

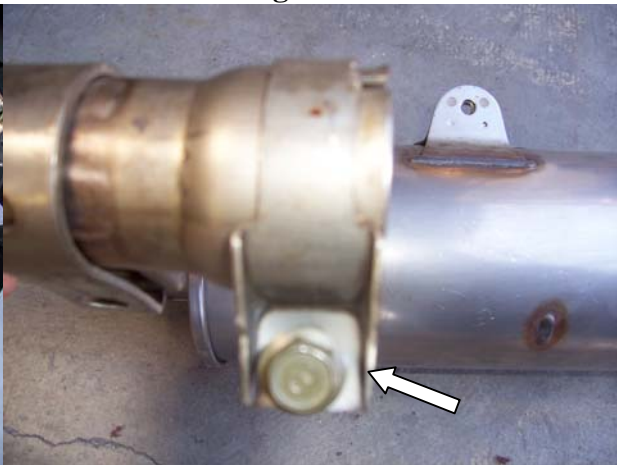


Figure 8



Figure 10

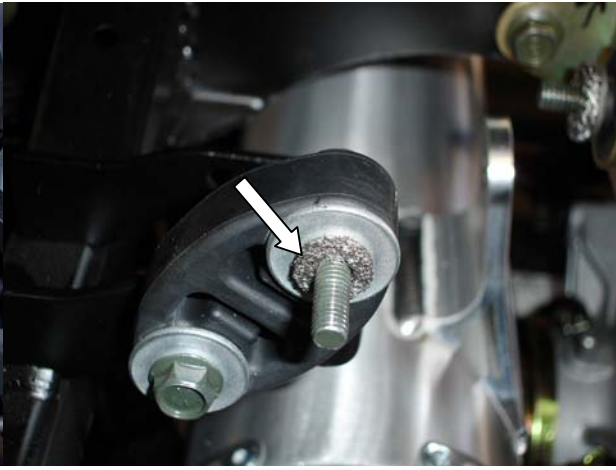


Figure 9



Figure 11

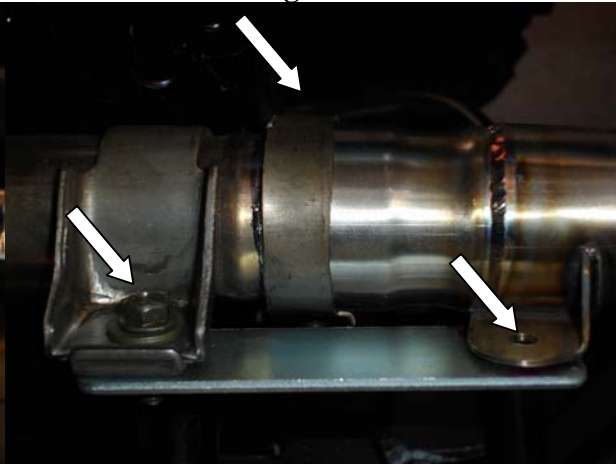


Figure 12



Figure 13

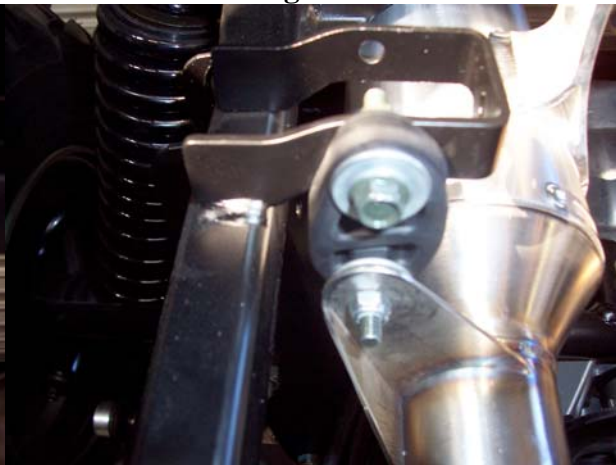


Figure 14

