



1340 North Melrose Drive, Vista, CA 92083 □

□ Phone 951-587-9222 □ Fax 760-758-5991

Email: [info@motoworks.com](mailto:info@motoworks.com)

**G2 4 Stroke Racing System**

**Part # 52-6007**

**2008-09 Can-Am DS 450**

**Exhaust Kit Bill of Materials**

<b>1</b>	<b>Instruction sheet</b>	<b>52-6005</b>
<b>1</b>	<b>Stainless Steel Head Pipe</b>	<b>52-6005A</b>
<b>1</b>	<b>Stainless Steel Mid Pipe</b>	<b>52-6007F</b>
<b>1</b>	<b>Slip On Muffler</b>	<b>52-6007G</b>
<b>1</b>	<b>1.25 Black Ano. Tip</b>	<b>AT1</b>
<b>1</b>	<b>Spring</b>	<b>70-100-78</b>
<b>1</b>	<b>8mm X 1.25 X 45mm Flange Bolt</b>	<b>70-100-50</b>
<b>2</b>	<b>Motoworks stickers</b>	<b>07-1002</b>

**Caution: LET MOTORCYCLE COOL DOWN AT LEAST 1 HOUR BEFORE BEGINNING INSTALLATION.**

**Note: READ ALL INSTRUCTIONS BEFORE BEGINNING INSTALLATION.**

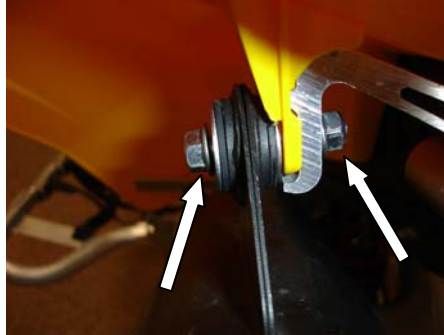
**Removal of Stock Exhaust:**

1. Remove the stock mid-pipe bolt, nut and washer secured to the sub-frame. Set these parts aside as they will be re-used.

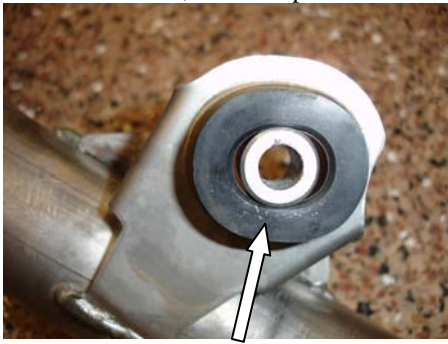


2. Now remove the stock silencer bolt, nut, two washers and spacer secured to the aluminum bracket. Set these parts aside as they will be re-used.

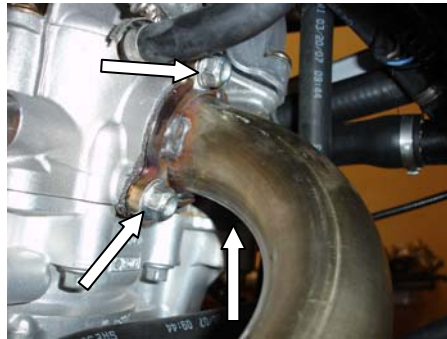
NOTE: It is important that you remember the positions of these stock hardware removed from step 2.



3. Remove stock muffler section.
4. On a work bench, remove spacer and rubber grommet from the mid pipe and silencer brackets.



5. Now remove three nuts securing the stock head pipe to the motor. Remove stock head pipe. Set these nuts aside as they will be re-used.



### **Installation Motoworks Full System Exhaust:**

6. Ensuring that the original gasket is secured over the motor studs, install the Motoworks Head Pipe using the original nuts removed from step 5 and tighten.



7. On a work bench, carefully install the rubber grommet and spacer removed from step 4 onto the Motoworks Mid Pipe Bracket.
8. Carefully install the Motoworks Mid Pipe over the Motoworks Head Pipe until the Motoworks Mid Pipe Bracket lines up with the mounting location on the sub frame.
9. Using the original hardware removed from step 1, install through the sub frame and secure the Motoworks Mid Pipe and tighten.



10. On a work bench, install the silencer rubber grommet and spacer removed from step 4 onto the Motoworks Silencer Bracket.
11. Now using the supplied 8mm flange bolt, two washers and spacer removed from step 2, slide the Motoworks Silencer Section onto the Motoworks Mid Pipe until the muffler mount lines up to the sub frame and tighten.
12. You can now install the supplied spring by attaching the spring to the Motoworks Mid Pipe Spring Hook and Motoworks Silencer Spring Hook.
13. Re-check all your work
14. We recommend that you clean the entire exhaust system with a mild detergent, i.e. glass cleaner prior to starting as any oily residue may cause permanent staining.
15. Before operating check for proper clearance between Motoworks exhaust and ATV i.e. frame, plastic, brake line, fuel line etc if problems exist re-check work

### **Jetting Specifications**

Purchase Motoworks FMI and install.

**Note: It is normal for the new exhaust to emit white smoke the first time you start the ATV. This is from the oil used during manufacturing.**